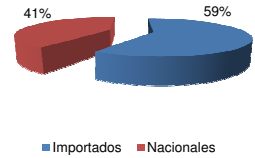




**Patentamientos por Marcas - Mercado Total**

	dic/08(a)	nov/08(b)	dic/07(c)	dic/06(d)	Var a-b	Var a-c	Var a-d	Ac. 08	Ac. 07	Var 08-07
<b>Automovil</b>	15.080	27.184	19.138	12.429	-44,53%	-21,20%	21,33%	456.388	426.801	6,93%
<b>Comercial Liviano</b>	3.425	6.188	3.878	3.743	-44,65%	-11,68%	-8,50%	117.226	103.592	13,16%
<b>Comercial Pesado</b>	860	1.280	906	977	-32,81%	-5,08%	-11,98%	22.898	23.009	-0,48%
<b>Otros Pesados</b>	459	876	606	576	-47,60%	-24,26%	-20,31%	14.201	14.350	-1,04%
<b>Total</b>	<b>19.824</b>	<b>35.528</b>	<b>24.528</b>	<b>17.725</b>	<b>-44,20%</b>	<b>-19,18%</b>	<b>11,84%</b>	<b>610.713</b>	<b>567.752</b>	<b>7,57%</b>
<b>Prom. diario</b>	1.101	1.776	1.363	933				2.473	2.289	
<b>Dias habiles</b>	18	20	18	19				247	248	



Patentamientos Mensuales												
	ene	feb	mar	abr	may	jun	jul	ago	sep	oct	nov	dic
2008	85.811	46.477	44.277	56.149	56.809	49.082	58.414	51.110	56.197	51.036	35.528	19.824
2007	82.552	38.841	47.379	41.626	47.231	42.139	50.182	54.285	48.857	49.497	40.640	24.528
<b>Var% 08-07</b>	<b>3,95%</b>	<b>19,66%</b>	<b>-6,55%</b>	<b>34,89%</b>	<b>20,28%</b>	<b>16,48%</b>	<b>16,40%</b>	<b>-5,85%</b>	<b>15,02%</b>	<b>3,11%</b>	<b>-12,58%</b>	<b>-19,18%</b>
2006	65.984	32.425	40.400	34.249	38.284	36.567	36.949	39.123	39.643	36.009	33.252	17.725
2005	52.400	26.323	30.558	32.929	33.443	32.556	34.172	31.908	36.126	30.578	29.364	15.968

Patentamientos por Marcas - Totales												2008	2008	2007	2007	Var
Marca	dic/08(a)	Part %	dic/07(c)	Part %	nov/08(e)	Part %	Var a-c	Var a-e	ene - dic	Part %	ene - dic	Part %	2008-2007			
Volkswagen	4.143	21,41%	7.588	31,76%	6.868	19,84%	-45,40%	-39,68%	111.999	18,79%	109.179	19,72%	2,58%			
Chevrolet	3.278	16,94%	2.929	12,26%	5.433	15,69%	11,92%	-39,67%	85.608	14,36%	81.963	14,80%	4,45%			
Ford	2.212	11,43%	2.898	12,13%	4.294	12,40%	-23,67%	-48,49%	74.219	12,45%	75.729	13,68%	-1,99%			
Fiat	2.199	11,37%	1.933	8,09%	3.630	10,48%	13,76%	-39,42%	63.593	10,67%	55.131	9,96%	15,35%			
Peugeot	1.932	9,99%	2.700	11,30%	3.272	9,45%	-28,44%	-40,95%	59.117	9,92%	57.923	10,46%	2,06%			
Renault	1.927	9,96%	2.182	9,13%	4.190	12,10%	-11,69%	-54,01%	69.292	11,62%	66.964	12,09%	3,48%			
Toyota	923	4,77%	877	3,67%	1.698	4,90%	5,25%	-45,64%	30.524	5,12%	27.935	5,04%	9,27%			
Citroen	775	4,01%	742	3,11%	1.275	3,68%	4,45%	-39,22%	22.211	3,73%	21.270	3,84%	4,42%			
Mercedes Benz	399	2,06%	434	1,82%	716	2,07%	-8,06%	-44,27%	14.233	2,39%	13.117	2,37%	8,51%			
Suzuki	379	1,96%	259	1,08%	646	1,87%	46,33%	-41,33%	9.331	1,57%	9.574	1,73%	-2,54%			
Honda	259	1,34%	443	1,85%	828	2,39%	-41,53%	-68,72%	18.714	3,14%	11.076	2,00%	68,96%			
Nissan	118	0,61%	117	0,49%	252	0,73%	0,85%	-53,17%	6.234	1,05%	3.236	0,58%	92,65%			
Hyundai	109	0,56%	96	0,40%	261	0,75%	13,54%	-58,24%	4.893	0,82%	2.083	0,38%	134,90%			
Iveco	104	0,54%	144	0,60%	251	0,72%	-27,78%	-58,57%	4.468	0,75%	3.559	0,64%	25,54%			
Kia	89	0,46%	93	0,39%	198	0,57%	-4,30%	-55,05%	3.679	0,62%	1.846	0,33%	99,30%			
Volvo	64	0,33%	64	0,27%	69	0,20%	0,00%	-7,25%	1.227	0,21%	902	0,16%	36,03%			
Agrale	58	0,30%	26	0,11%	67	0,19%	123,08%	-13,43%	680	0,11%	475	0,09%	43,16%			
Puma de Tat	54	0,28%		0,00%	3	0,01%	N/D	1700,00%	363	0,06%	182	0,03%	99,45%			
Audi	52	0,27%	75	0,31%	135	0,39%	-30,67%	-61,48%	3.262	0,55%	2.742	0,50%	18,96%			
Scania	48	0,25%	49	0,21%	90	0,26%	-2,04%	-46,67%	1.629	0,27%	1.600	0,29%	1,81%			
Jeep	41	0,21%	50	0,21%	56	0,16%	-18,00%	-26,79%	1.577	0,26%	1.118	0,20%	41,06%			
Dodge	34	0,18%	9	0,04%	53	0,15%	277,78%	-35,85%	1.028	0,17%	420	0,08%	144,76%			
Chrysler	32	0,17%	38	0,16%	68	0,20%	-15,79%	-52,94%	1.639	0,27%	1.030	0,19%	59,13%			
BMW	27	0,14%	37	0,15%	84	0,24%	-27,03%	-67,86%	2.728	0,46%	2.264	0,41%	20,49%			
Mitsubishi	25	0,13%	44	0,18%	64	0,18%	-43,18%	-60,94%	1.727	0,29%	1.145	0,21%	50,83%			
Chery	19	0,10%		0,00%	43	0,12%	N/D	-55,81%	319	0,05%		0,00%	N/D			
Seat	13	0,07%	6	0,03%	21	0,06%	116,67%	-38,10%	460	0,08%	75	0,01%	513,33%			
Subaru	13	0,07%	22	0,09%	36	0,10%	-40,91%	-63,89%	556	0,09%	411	0,07%	35,28%			
Land Rover	8	0,04%	9	0,04%	9	0,03%	-11,11%	-11,11%	207	0,03%	207	0,04%	0,00%			
Mini	8	0,04%	15	0,06%	4	0,01%	-46,67%	100,00%	421	0,07%	379	0,07%	11,08%			
Porsche	4	0,02%	5	0,02%	9	0,03%	-20,00%	-55,56%	187	0,03%	115	0,02%	62,61%			
Lexus	1	0,01%		0,00%	1	0,00%	N/D	0,00%	2	0,00%	1	0,00%	100,00%			
Alfa Romeo		0,00%	3	0,01%		0,00%	-100,00%	N/D	27	0,00%	67	0,01%	-59,70%			
Aston Martin		0,00%	1	0,00%		0,00%	-100,00%	N/D		0,00%	1	0,00%	-100,00%			
Ferrari		0,00%	1	0,00%	1	0,00%	-100,00%	-100,00%	5	0,00%	6	0,00%	-16,67%			
Hummer		0,00%		0,00%		0,00%	N/D	N/D	2	0,00%	7	0,00%	-71,43%			
Isuzu		0,00%		0,00%		0,00%	N/D	N/D		0,00%	9	0,00%	-100,00%			
Jaguar		0,00%	1	0,00%		0,00%	-100,00%	N/D	2	0,00%	14	0,00%	-85,71%			
Lamborghini		0,00%		0,00%		0,00%	N/D	N/D	1	0,00%		0,00%	N/D			
Maserati		0,00%		0,00%		0,00%	N/D	N/D		0,00%	3	0,00%	-100,00%			
<b>Total</b>	<b>19.347</b>		<b>23.890</b>		<b>34.625</b>				<b>596.164</b>		<b>553.758</b>					

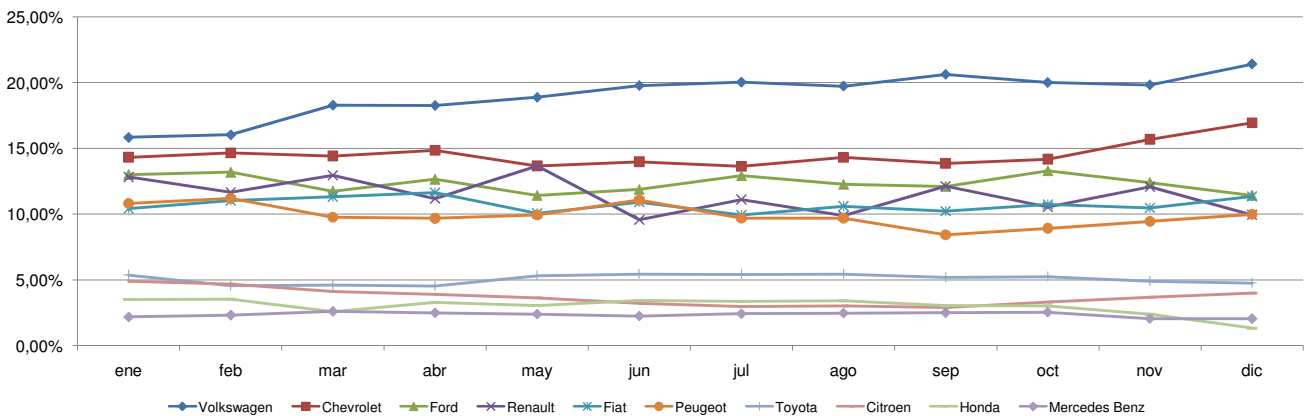


Patentamientos por Marcas - Mercado Total

Patentamientos por Marcas - Autos + Livianos										2008	2008	2007	2007	Var
Marca	dic/08(a)	Part %	dic/07(c)	Part %	nov/08(e)	Part %	Var a-c	Var a-e	ene - dic	Part %	ene - dic	Part %	2008-2007	
Volkswagen	4.058	21,93%	7.448	32,36%	6.753	20,24%	-45,52%	-39,91%	109.271	19,05%	105.691	19,93%	3,39%	
Chevrolet	3.278	17,72%	2.929	12,73%	5.433	16,28%	11,92%	-39,67%	85.608	14,92%	81.963	15,45%	4,45%	
Fiat	2.195	11,86%	1.933	8,40%	3.630	10,88%	13,55%	-39,53%	63.589	11,09%	55.091	10,39%	15,43%	
Ford	2.002	10,82%	2.691	11,69%	4.040	12,11%	-25,60%	-50,45%	69.682	12,15%	70.808	13,35%	-1,59%	
Peugeot	1.932	10,44%	2.700	11,73%	3.272	9,80%	-28,44%	-40,95%	59.117	10,31%	57.923	10,92%	2,06%	
Renault	1.912	10,33%	2.147	9,33%	4.142	12,41%	-10,95%	-53,84%	68.655	11,97%	65.474	12,34%	4,86%	
Toyota	923	4,99%	877	3,81%	1.698	5,09%	5,25%	-45,64%	30.524	5,32%	27.935	5,27%	9,27%	
Citroen	775	4,19%	742	3,22%	1.275	3,82%	4,45%	-39,22%	22.211	3,87%	21.270	4,01%	4,42%	
Suzuki	379	2,05%	259	1,13%	646	1,94%	46,33%	-41,33%	9.331	1,63%	9.574	1,81%	-2,54%	
Honda	259	1,40%	443	1,92%	828	2,48%	-41,53%	-68,72%	18.714	3,26%	11.076	2,09%	68,96%	
Mercedes Benz	156	0,84%	161	0,70%	275	0,82%	-3,11%	-43,27%	6.387	1,11%	4.718	0,89%	35,38%	
Nissan	118	0,64%	117	0,51%	252	0,76%	0,85%	-53,17%	6.234	1,09%	3.236	0,61%	92,65%	
Hyundai	106	0,57%	96	0,42%	249	0,75%	10,42%	-57,43%	4.662	0,81%	2.046	0,39%	127,86%	
Kia	89	0,48%	93	0,40%	198	0,59%	-4,30%	-55,05%	3.679	0,64%	1.846	0,35%	99,30%	
Audi	52	0,28%	75	0,33%	135	0,40%	-30,67%	-61,48%	3.262	0,57%	2.742	0,52%	18,96%	
Jeep	41	0,22%	50	0,22%	56	0,17%	-18,00%	-26,79%	1.577	0,27%	1.118	0,21%	41,06%	
Iveco	35	0,19%	41	0,18%	75	0,22%	-14,63%	-53,33%	1.348	0,24%	1.306	0,25%	3,22%	
Dodge	34	0,18%	9	0,04%	53	0,16%	277,78%	-35,85%	1.028	0,18%	420	0,08%	144,76%	
Chrysler	32	0,17%	38	0,17%	68	0,20%	-15,79%	-52,94%	1.639	0,29%	1.030	0,19%	59,13%	
BMW	27	0,15%	37	0,16%	84	0,25%	-27,03%	-67,86%	2.728	0,48%	2.264	0,43%	20,49%	
Mitsubishi	25	0,14%	44	0,19%	64	0,19%	-43,18%	-60,94%	1.727	0,30%	1.145	0,22%	50,83%	
Chery	19	0,10%		0,00%	43	0,13%	N/D	-55,81%	319	0,06%		0,00%	N/D	
Seat	13	0,07%	6	0,03%	21	0,06%	116,67%	-38,10%	460	0,08%	75	0,01%	513,33%	
Subaru	13	0,07%	22	0,10%	36	0,11%	-40,91%	-63,89%	556	0,10%	411	0,08%	35,28%	
Volvo	9	0,05%	23	0,10%	22	0,07%	-60,87%	-59,09%	449	0,08%	420	0,08%	6,90%	
Land Rover	8	0,04%	9	0,04%	9	0,03%	-11,11%	-11,11%	207	0,04%	207	0,04%	0,00%	
Mini	8	0,04%	15	0,07%	4	0,01%	-46,67%	100,00%	421	0,07%	379	0,07%	11,08%	
Porsche	4	0,02%	5	0,02%	9	0,03%	-20,00%	-55,56%	187	0,03%	115	0,02%	62,61%	
Lexus	1	0,01%		0,00%	1	0,00%	N/D	0,00%	2	0,00%	1	0,00%	100,00%	
Agrale		0,00%		0,00%		0,00%	N/D	N/D	1	0,00%	2	0,00%	-50,00%	
Alfa Romeo		0,00%	3	0,01%		0,00%	-100,00%	N/D	27	0,00%	67	0,01%	-59,70%	
Aston Martin		0,00%	1	0,00%		0,00%	-100,00%	N/D		0,00%	1	0,00%	-100,00%	
Ferrari		0,00%	1	0,00%	1	0,00%	-100,00%	-100,00%	5	0,00%	6	0,00%	-16,67%	
Hummer		0,00%		0,00%		0,00%	N/D	N/D	2	0,00%	7	0,00%	-71,43%	
Isuzu		0,00%		0,00%		0,00%	N/D	N/D		0,00%	9	0,00%	-100,00%	
Jaguar		0,00%	1	0,00%		0,00%	-100,00%	N/D	2	0,00%	14	0,00%	-85,71%	
Lamborghini		0,00%		0,00%		0,00%	N/D	N/D	1	0,00%		0,00%	N/D	
Maserati		0,00%		0,00%		0,00%	N/D	N/D		0,00%	3	0,00%	-100,00%	
<b>Total</b>	<b>18.503</b>		<b>23.016</b>		<b>33.372</b>				<b>573.612</b>		<b>530.393</b>			

Patentamientos por Marcas - Camiones + Buses										2008	2008	2007	2007	Var
Marca	dic/08(a)	Part %	dic/07(c)	Part %	nov/08(e)	Part %	Var a-c	Var a-e	ene - dic	Part %	ene - dic	Part %	2008-2007	
Mercedes Benz	243	28,79%	273	31,24%	441	35,20%	-10,99%	-44,90%	7.846	34,79%	8.399	35,95%	-6,58%	
Ford	210	24,88%	207	23,68%	254	20,27%	1,45%	-17,32%	4.537	20,12%	4.921	21,06%	-7,80%	
Volkswagen	85	10,07%	140	16,02%	115	9,18%	-39,29%	-26,09%	2.728	12,10%	3.488	14,93%	-21,79%	
Iveco	69	8,18%	103	11,78%	176	14,05%	-33,01%	-60,80%	3.120	13,83%	2.253	9,64%	38,48%	
Agrale	58	6,87%	26	2,97%	67	5,35%	123,08%	-13,43%	679	3,01%	473	2,02%	43,55%	
Volvo	55	6,52%	41	4,69%	47	3,75%	34,15%	17,02%	778	3,45%	482	2,06%	61,41%	
Puma de Tat	54	6,40%		0,00%	3	0,24%	N/D	1700,00%	363	1,61%	182	0,78%	99,45%	
Scania	48	5,69%	49	5,61%	90	7,18%	-2,04%	-46,67%	1.629	7,22%	1.600	6,85%	1,81%	
Renault	15	1,78%	35	4,00%	48	3,83%	-57,14%	-68,75%	637	2,82%	1.490	6,38%	-57,25%	
Fiat	4	0,47%		0,00%		0,00%	N/D	N/D	4	0,02%	40	0,17%	-90,00%	
Hyundai	3	0,36%		0,00%	12	0,96%	N/D	-75,00%	231	1,02%	37	0,16%	524,32%	
<b>Total</b>	<b>844</b>		<b>874</b>		<b>1.253</b>				<b>22.552</b>		<b>23.365</b>			

Participacion por Marcas - Evolucion Mensual

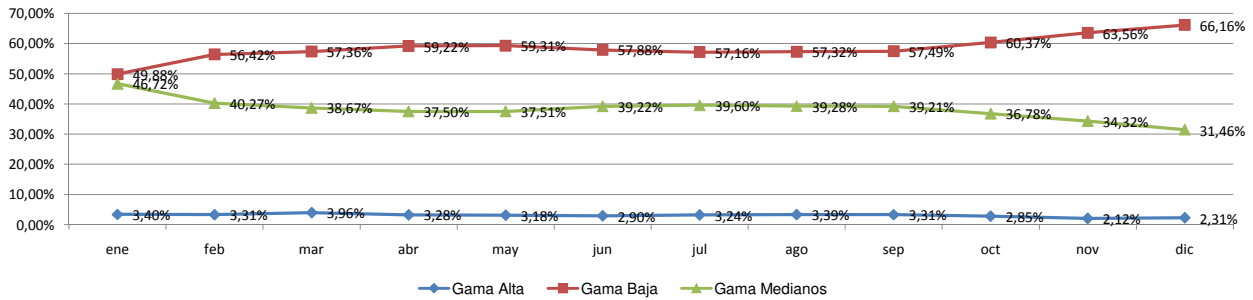




**Patentamientos por Ranking de Automoviles - Mercado Total**

Rank.	Ranking Por Modelos - Automoviles										
	Modelo	dic/08 (a)	dic/07 (b)	nov/08 (c)	Var a-b	Var a-c	Ac. 08	Part %	Ac. 07	Part %	Var 08-07
1	Chevrolet CORSA	1.560	1.216	2.560	28,29%	-39,06%	35.264	7,73%	33.610	7,88%	4,92%
2	Volkswagen GOL	1.469	5.506	2.164	-73,32%	-32,12%	41.992	9,21%	44.107	10,34%	-4,80%
3	Peugeot 207 COMPACT	653		1.438	N/D	-54,59%	3.976	0,87%		0,00%	N/D
4	Fiat SIENA	624	279	811	123,66%	-23,06%	14.118	3,10%	9.671	2,27%	45,98%
5	Volkswagen SURAN	580	606	1.123	-4,29%	-48,35%	15.962	3,50%	15.099	3,54%	5,72%
6	Renault CLIO	569	530	1.697	7,36%	-66,47%	18.106	3,97%	20.741	4,86%	-12,70%
7	Volkswagen GOL TREND	504		980	N/D	-48,57%	3.720	0,82%		0,00%	N/D
8	Peugeot 307	477	698	721	-31,66%	-33,84%	16.094	3,53%	16.340	3,83%	-1,51%
9	Ford ECOSPORT	450	776	1.023	-42,01%	-56,01%	17.562	3,85%	16.203	3,80%	8,39%
10	Ford FIESTA	386	364	788	6,04%	-51,02%	14.010	3,07%	16.511	3,87%	-15,15%
11	Fiat UNO	376	445	695	-15,51%	-45,90%	11.731	2,57%	11.251	2,64%	4,27%
12	Ford KA	359	444	846	-19,14%	-57,57%	9.781	2,14%	10.027	2,35%	-2,45%
13	Fiat PALIO	355	466	609	-23,82%	-41,71%	11.909	2,61%	13.809	3,24%	-13,76%
14	Volkswagen BORA	346	222	741	55,86%	-53,31%	12.702	2,79%	8.855	2,08%	43,44%
15	Volkswagen GOL COUNTRY	341	189	274	80,42%	24,45%	4.225	0,93%	5.360	1,26%	-21,18%
16	Chevrolet CORSA II	336	471	618	-28,66%	-45,63%	9.425	2,07%	9.523	2,23%	-1,03%
17	Citroen C4	332	276	479	20,29%	-30,69%	8.509	1,87%	3.786	0,89%	124,75%
18	Suzuki FUN	310	213	516	45,54%	-39,92%	7.135	1,56%	8.525	2,00%	-16,30%
19	Chevrolet ASTRA	288	285	553	1,05%	-47,92%	11.178	2,45%	9.482	2,22%	17,89%
20	Volkswagen FOX/CROSSFOX	271	367	561	-26,16%	-51,69%	12.815	2,81%	13.146	3,08%	-2,52%
21	Peugeot 206	264	1.338	350	-80,27%	-24,57%	26.253	5,76%	27.675	6,49%	-5,14%
22	Chevrolet MERIVA	259	303	412	-14,52%	-37,14%	7.515	1,65%	9.055	2,12%	-17,01%
23	Fiat PALIO WEEKEND	241	185	375	30,27%	-35,73%	4.281	0,94%	5.830	1,37%	-26,57%
24	Renault KANGOO	220	291	461	-24,40%	-52,28%	7.873	1,73%	5.808	1,36%	35,55%
25	Ford FOCUS	193	270	384	-28,52%	-49,74%	9.306	2,04%	9.709	2,28%	-4,15%
26	Renault MEGANE	191	327	369	-41,59%	-48,24%	10.885	2,39%	12.579	2,95%	-13,47%
27	Chevrolet SPARK	191		346	N/D	-44,80%	797	0,17%		0,00%	N/D
28	Toyota COROLLA	187	131	434	42,75%	-56,91%	7.432	1,63%	6.773	1,59%	9,73%
29	Fiat PUNTO	177	113	354	56,64%	-50,00%	7.519	1,65%	937	0,22%	702,45%
30	Chevrolet CORSA SW	167	177	275	-5,65%	-39,27%	4.983	1,09%	5.633	1,32%	-11,54%
31	Renault SANDERO	165	6	200	2650,00%	-17,50%	4.263	0,93%	6	0,00%	70950,00%
32	Citroen C3	163	157	278	3,82%	-41,37%	4.574	1,00%	7.533	1,77%	-39,28%
33	Renault LOGAN	163	90	198	81,11%	-17,68%	4.777	1,05%	1.769	0,41%	170,04%
34	Volkswagen POLO	116	133	174	-12,78%	-33,33%	3.703	0,81%	5.168	1,21%	-28,35%
35	Renault MEGANE II	114	212	231	-46,23%	-50,65%	5.220	1,14%	6.826	1,60%	-23,53%
36	Fiat IDEA	101	159	200	-36,48%	-49,50%	4.294	0,94%	5.070	1,19%	-15,31%
37	Volkswagen VENTO	100	145	236	-31,03%	-57,63%	5.265	1,15%	4.899	1,15%	7,47%
38	Honda FIT	89	237	284	-62,45%	-68,66%	7.653	1,68%	5.015	1,18%	52,60%
39	Chevrolet VECTRA	84	81	136	3,70%	-38,24%	3.394	0,74%	2.785	0,65%	21,87%
40	Honda CIVIC	77	105	311	-26,67%	-75,24%	5.715	1,25%	3.244	0,76%	76,17%
41	Peugeot PARTNER	77	186	122	-58,60%	-36,89%	2.770	0,61%	3.688	0,86%	-24,89%
42	Chevrolet ZAFIRA	77	83	112	-7,23%	-31,25%	2.042	0,45%	1.807	0,42%	13,00%
43	Citroen BERLINGO	72	90	130	-20,00%	-44,62%	2.662	0,58%	3.071	0,72%	-13,32%
44	Nissan TIIDA	71	22	148	222,73%	-52,03%	3.029	0,66%	50	0,01%	5958,00%
45	Renault SCENIC	70	79	124	-11,39%	-43,55%	2.312	0,51%	2.883	0,68%	-19,81%
46	Citroen PICASSO	68	85	114	-20,00%	-40,35%	2.382	0,52%	2.702	0,63%	-11,84%
47	Ford FOCUS II	65		174	N/D	-62,64%	622	0,14%		0,00%	N/D
48	Volkswagen VOYAGE	56		3	N/D	1766,67%	59	0,01%		0,00%	N/D
49	Chevrolet AVEO	46		3	N/D	1433,33%	49	0,01%		0,00%	N/D
50	Volkswagen PASSAT	38	42	36	-9,52%	5,56%	1.136	0,25%	1.307	0,31%	-13,08%
51	Otros	591	722	1.013	-18,14%	-41,66%	23.105	5,07%	18.518	4,34%	24,77%
<b>Total</b>		<b>15.079</b>	<b>19.122</b>	<b>27.184</b>			<b>456.084</b>	<b>1</b>	<b>426.386</b>		

**Autos - Participacion por Segmento**





**Patentamientos por Ranking de Livianos y Pesados - Mercado Total**

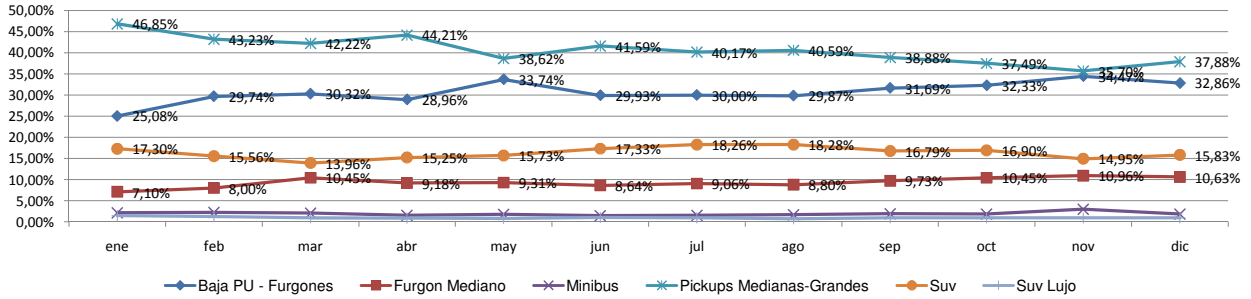
Rank.	Comercial Liviano										
	Modelo	dic/08 (a)	dic/07 (b)	nov/08 (c)	Var a-b	Var a-c	Ac. 08	Part %	Ac. 07	Part %	Var 08-07
1	Toyota HILUX	572	603	1.049	-5,14%	-45,47%	18.544	15,82%	16.964	16,38%	9,31%
2	Ford RANGER	462	711	687	-35,02%	-32,75%	14.813	12,64%	14.530	14,03%	1,95%
3	Renault KANGOO FURGON	302	402	605	-24,88%	-50,08%	11.327	9,66%	10.988	10,61%	3,09%
4	Peugeot PARTNER FURGON	286	291	461	-1,72%	-37,96%	7.154	6,10%	7.019	6,78%	1,92%
5	Fiat FIORINO	218	150	388	45,33%	-43,81%	6.292	5,37%	4.671	4,51%	34,70%
6	Chevrolet S-10	179	286	321	-37,41%	-44,24%	8.784	7,49%	9.511	9,19%	-7,64%
7	Citroen BERLINGO FURGON	126	122	245	3,28%	-48,57%	3.592	3,06%	3.779	3,65%	-4,95%
8	Toyota HILUX SW4	113	66	116	71,21%	-2,59%	2.403	2,05%	2.211	2,14%	8,68%
9	Volkswagen SAVEIRO	110	106	251	3,77%	-56,18%	3.906	3,33%	4.276	4,13%	-8,65%
10	Mercedes Benz SPRINTER	102	120	198	-15,00%	-48,48%	3.724	3,18%	2.934	2,83%	26,93%
11	Renault MASTER	79	132	219	-40,15%	-63,93%	2.883	2,46%	2.543	2,46%	13,37%
12	Honda CRV	71	83	193	-14,46%	-63,21%	4.778	4,08%	2.184	2,11%	118,77%
13	Chevrolet CAPTIVA	68	8	55	750,00%	23,64%	1.379	1,18%	17	0,02%	8011,76%
14	Fiat DUCATO	54	52	72	3,85%	-25,00%	1.119	0,95%	867	0,84%	29,07%
15	Peugeot BOXER	51	29	50	75,86%	2,00%	575	0,49%	603	0,58%	-4,64%
16	Ford F 100	44	77	67	-42,86%	-34,33%	2.143	1,83%	2.795	2,70%	-23,33%
17	Kia K2700	39	41	104	-4,88%	-62,50%	1.095	0,93%	758	0,73%	44,46%
18	Iveco DAILY	35	41	75	-14,63%	-53,33%	1.348	1,15%	1.306	1,26%	3,22%
19	Fiat UNO	32	38	94	-15,79%	-65,96%	1.118	0,95%	1.067	1,03%	4,78%
20	Hyundai SANTA FE	25	23	40	8,70%	-37,50%	1.217	1,04%	394	0,38%	208,88%
21	Otros	456	496	898	-8,06%	-49,22%	19.019	16,23%	14.122	13,64%	34,68%
<b>Total</b>		<b>3.424</b>	<b>3.877</b>	<b>6.188</b>			<b>117.213</b>	<b>1</b>	<b>103.539</b>		

Rank.	Comercial Pesado										
	Modelo	dic/08 (a)	dic/07 (b)	nov/08 (c)	Var a-b	Var a-c	Ac. 08	Part %	Ac. 07	Part %	Var 08-07
1	Ford F-4000	96	38	51	152,63%	88,24%	1.062	4,80%	790	4,04%	34,43%
2	Mercedes Benz BMO 384	66		44	N/D	50,00%	253	1,14%		0,00%	N/D
3	Puma de Tat D12	54		3	N/D	1700,00%	317	1,43%	139	0,71%	128,06%
4	Volvo B12R	40	18	12	122,22%	233,33%	138	0,62%	102	0,52%	35,29%
5	Mercedes Benz O-500	36	31	27	16,13%	33,33%	404	1,82%	422	2,16%	-4,27%
6	Ford CARGO 1722 E	29	60	86	-51,67%	-66,28%	1.541	6,96%	765	3,91%	101,44%
7	Iveco 170 E	29	53	83	-45,28%	-65,06%	1.244	5,62%	849	4,34%	46,53%
8	Volkswagen 17220	27	28	45	-3,57%	-40,00%	914	4,13%	1.037	5,30%	-11,86%
9	Agrale MT12	27	12	43	125,00%	-37,21%	341	1,54%	274	1,40%	24,45%
10	Ford CARGO 1517 E	21	7	45	200,00%	-53,33%	344	1,55%	237	1,21%	45,15%
11	Ford CARGO 712	21	14	14	50,00%	50,00%	257	1,16%	110	0,56%	133,64%
12	Mercedes Benz LS 1634	19	57	48	-66,67%	-60,42%	1.069	4,83%	1.604	8,20%	-33,35%
13	Mercedes Benz OF 1418	19	21	11	-9,52%	72,73%	966	4,36%	1.121	5,73%	-13,83%
14	Agrale MA 15	19	3	8	533,33%	137,50%	110	0,50%	3	0,02%	3566,67%
15	Mercedes Benz ATEGO 1725	17	24	48	-29,17%	-64,58%	691	3,12%	180	0,92%	283,89%
16	Iveco 490 S	16		34	N/D	-52,94%	447	2,02%		0,00%	N/D
17	Mercedes Benz L-1624	15	40	73	-62,50%	-79,45%	965	4,36%	1.158	5,92%	-16,67%
18	Ford CARGO 1832 E	15	51	29	-70,59%	-48,28%	629	2,84%	461	2,36%	36,44%
19	Mercedes Benz 1315	14	5	52	180,00%	-73,08%	706	3,19%	537	2,74%	31,47%
20	Scania G340	13		32	N/D	-59,38%	390	1,76%		0,00%	N/D
21	Otros	250	380	465	-34,21%	-46,24%	9.352	42,24%	9.782	49,98%	-4,40%
<b>Total</b>		<b>843</b>	<b>842</b>	<b>1.253</b>			<b>22.140</b>	<b>1</b>	<b>19.571</b>		

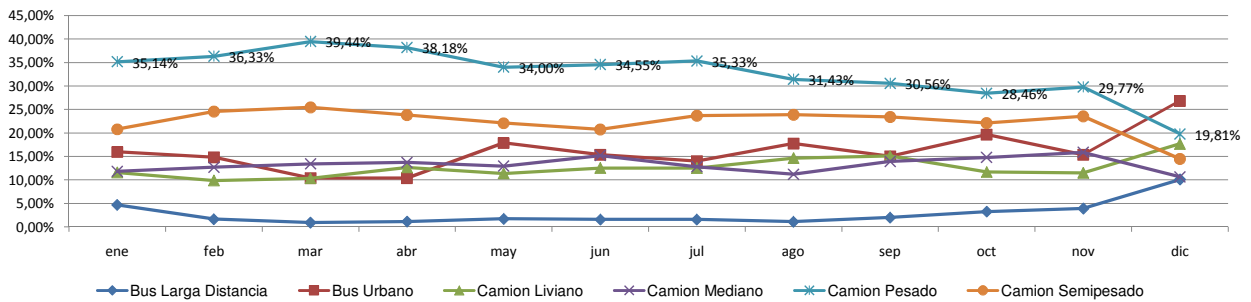


Patentamientos por Ranking de Livianos y Pesados - Mercado Total

Comercial Liviano



Comercial Pesado



PATENTAMIENTOS POR PROVINCIAS ACUMULADOS 2008

Descripción	12/08 (a)	Part %	12/07 (c)	Part %	11/08 (e)	Part %	Var a-c	Var a-e	01/08 ~ 12/08	Part %	01/07 ~ 12/07	Part %	Variación de acumulados
BUENOS AIRES	6.401	33,05%	7.176	30,00%	11.437	33,01%	-10,80%	-44,03%	186.526	31,27%	172.692	31,21%	8,01%
CAPITAL FEDERAL	5.004	25,84%	7.310	30,56%	7.103	20,50%	-31,55%	-29,55%	113.677	19,06%	115.596	20,89%	-1,66%
CORDOBA	1.415	7,31%	1.797	7,51%	3.308	9,55%	-21,26%	-57,22%	61.920	10,38%	53.737	9,71%	15,23%
SANTA FE	1.267	6,54%	1.897	7,93%	2.678	7,73%	-33,21%	-52,69%	53.319	8,94%	50.308	9,09%	5,99%
MENDOZA	550	2,84%	634	2,65%	1.140	3,29%	-13,25%	-51,75%	21.643	3,63%	19.458	3,52%	11,23%
CHUBUT	529	2,73%	546	2,28%	900	2,60%	-3,11%	-41,22%	14.626	2,45%	13.074	2,36%	11,87%
SANTA CRUZ	429	2,22%	459	1,92%	656	1,89%	-6,54%	-34,60%	9.916	1,66%	8.469	1,53%	17,09%
NEUQUEN	421	2,17%	396	1,66%	890	2,57%	6,31%	-52,70%	14.203	2,38%	11.977	2,16%	18,59%
CHACO	418	2,16%	175	0,73%	744	2,15%	138,86%	-43,82%	11.398	1,91%	8.010	1,45%	42,30%
TIERRA DEL FUEGO	369	1,91%	507	2,12%	522	1,51%	-27,22%	-29,31%	7.069	1,19%	7.120	1,29%	-0,72%
RIO NEGRO	346	1,79%	293	1,22%	544	1,57%	18,09%	-36,40%	8.832	1,48%	8.681	1,57%	1,74%
SALTA	327	1,69%	341	1,43%	528	1,52%	-4,11%	-38,07%	11.469	1,92%	10.638	1,92%	7,81%
ENTRE RIOS	321	1,66%	374	1,56%	720	2,08%	-14,17%	-55,42%	14.275	2,39%	12.750	2,30%	11,96%
TUCUMAN	245	1,27%	405	1,69%	686	1,98%	-39,51%	-64,29%	11.734	1,97%	10.421	1,88%	12,60%
CORRIENTES	243	1,25%	251	1,05%	589	1,70%	-3,19%	-58,74%	10.511	1,76%	8.944	1,62%	17,52%
LA PAMPA	216	1,12%	214	0,89%	337	0,97%	0,93%	-35,91%	6.939	1,16%	6.035	1,09%	14,98%
JUJUY	153	0,79%	317	1,33%	285	0,82%	-51,74%	-46,32%	6.027	1,01%	5.675	1,03%	6,20%
SAN LUIS	135	0,70%	211	0,88%	245	0,71%	-36,02%	-44,90%	4.238	0,71%	3.867	0,70%	9,59%
SAN JUAN	125	0,65%	175	0,73%	323	0,93%	-28,57%	-61,30%	5.788	0,97%	5.009	0,91%	15,55%
MISIONES	124	0,64%	122	0,51%	267	0,77%	1,64%	-53,56%	6.847	1,15%	7.222	1,31%	-5,19%
ESTERO	112	0,58%	85	0,36%	245	0,71%	31,76%	-54,29%	5.011	0,84%	4.521	0,82%	10,84%
CATAMARCA	79	0,41%	87	0,36%	206	0,59%	-9,20%	-61,65%	3.989	0,67%	3.410	0,62%	16,98%
FORMOSA	77	0,40%	66	0,28%	174	0,50%	16,67%	-55,75%	3.960	0,66%	3.335	0,60%	18,74%
LA RIOJA	59	0,30%	84	0,35%	125	0,36%	-29,76%	-52,80%	2.595	0,44%	2.453	0,44%	5,79%